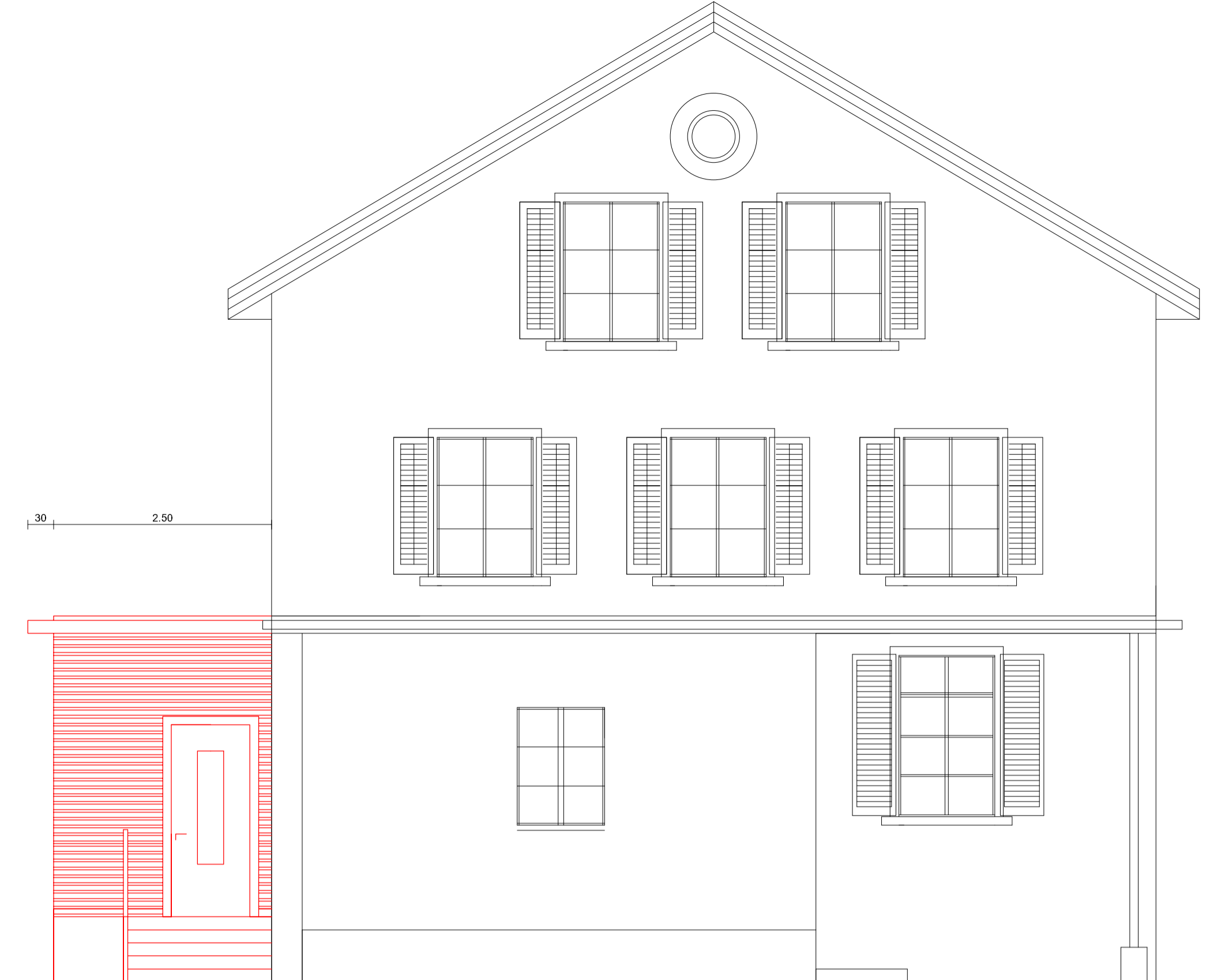
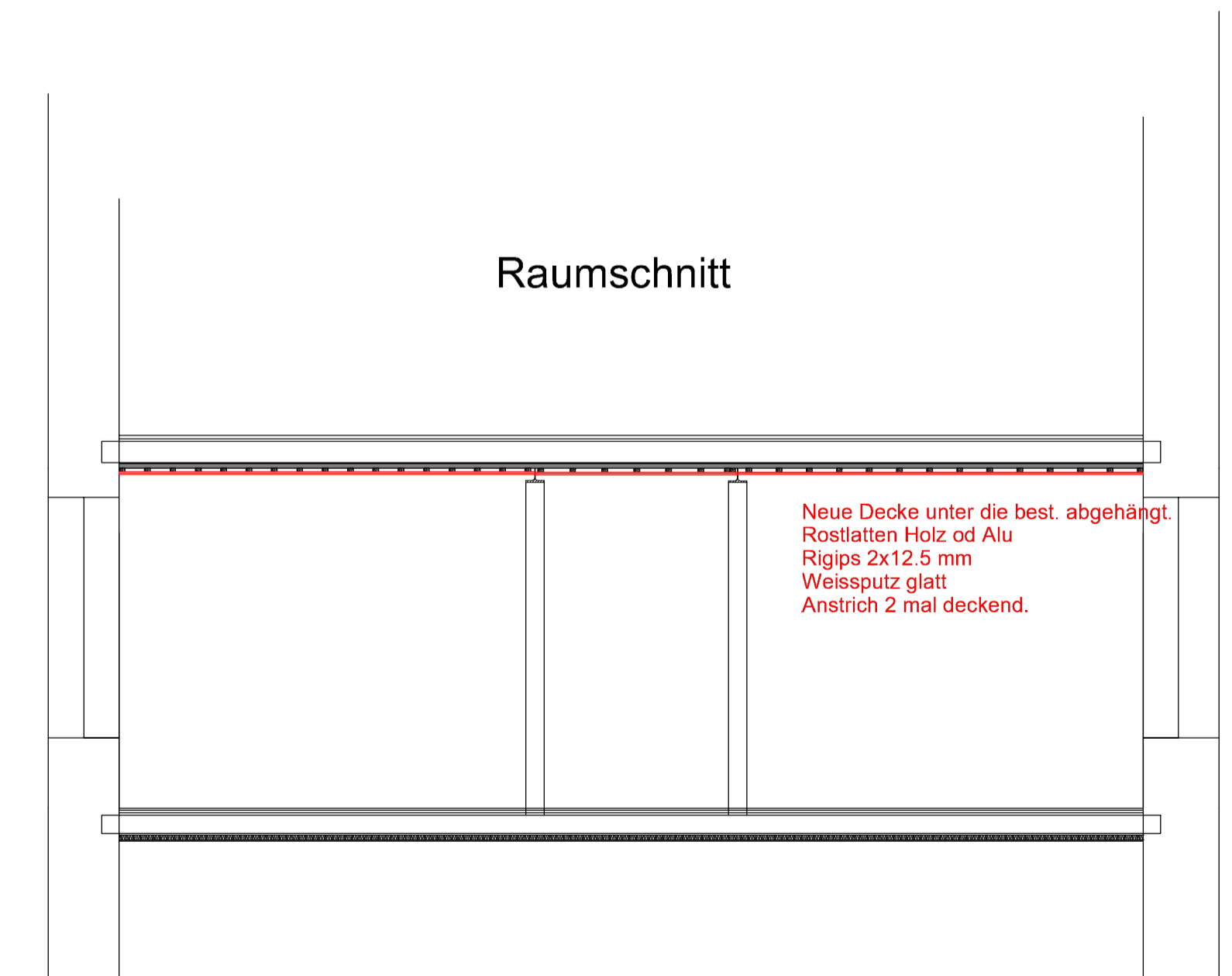
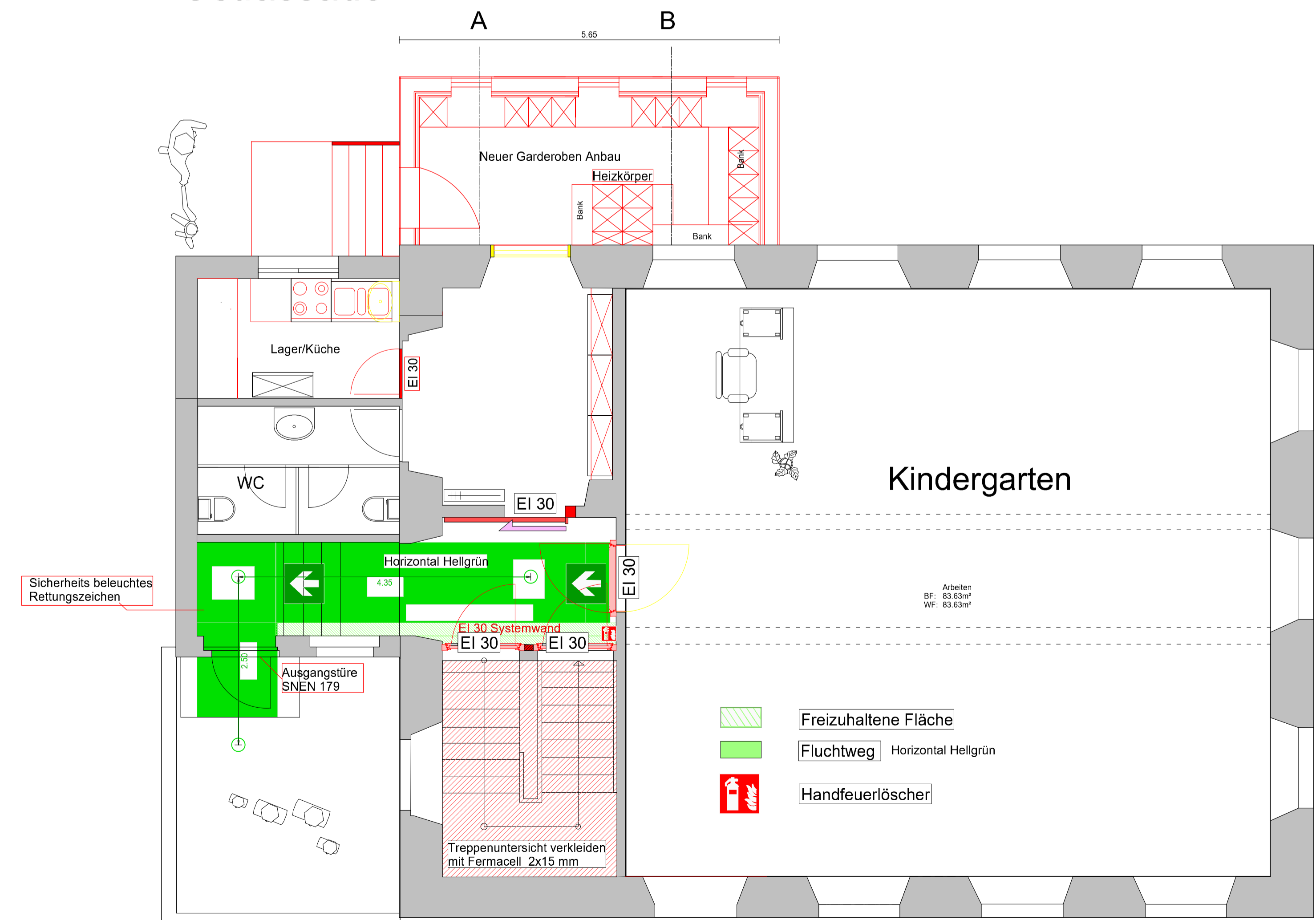


A B
Querschnitt Anbau



Nordfassade

Ostfassade



Raumschnitt

BERCHTOLD HOLZBAU

Grubenstrasse 26
8620 Wetzikon
Tel.: 043.477.50.00 Fax.: 043.477.51.91
E-Mail: info@berchtold-holzbau.ch

Vorriss

BV	: Kindergarten Leumat	Plan Nr.: 0
Ort	: 8607 Aathal Seegräben	Format: A1
Kunde	: Schulgemeinde Seegräben	
Bearb.	: PB	M : 1 : 50.00